

# Constellation Brands



## PRODUCT GUIDE

FROM IOWA ROTOCAST PLASTICS, INC.



# YOUR TRUSTED MANUFACTURER OF MERCHANDISING AND P.O.P. SOLUTIONS

Iowa Rotocast Plastics, founded in 1986, is an established manufacturer and supplier of merchandising equipment for the food and beverage industry. IRP caters to beverage brands and food service and hospitality groups, as well as working directly with stadiums, venues, and arenas to fulfill year-over-year needs.

Given the phenomenal growth of the company and the caliber of the equipment produced, it's easy to overlook IRP's humble origins. What is now known as IRP was originally the "Super Cooler" company, founded in 1983 by owners Floyd & Susan Mount. In 1986 the company changed its name to Iowa Rotocast Plastics to better reflect their continually expanding product line. Since its inception 36 years ago, IRP has had four relocations and numerous expansions due to growth. The current IRP manufacturing plant based in Decorah is now over 300,000 square feet, with production running 24 hours a day. In 2014 IRP's Fabrication Division was moved to a newly built facility adjacent to the plant headquarters.

The IRP family of brands is divided into three main product categories: RotoTough™ products that include ice-down merchandising solutions and case stackers; wire racks and electronic refrigeration; and IRP's fabricated food & beverage equipment built for on/off premise. IRP equipment meets or exceeds required industry regulations and is NSF and UL approved. All RotoTough™ and fabricated equipment is manufactured in Decorah, IA at the IRP plants. Ultimately this means all projects ship straight from the facility where they are designed and fabricated, allowing maximum efficiency and quality control.

## INDEX

SINGLE SERVE/SAMPLING .....	4
EVENT CARTS/DRAFT & PACKAGE.....	8
REFRIGERATION .....	16
UTILITY .....	17
RACKS/STACKERS .....	20
GRIZZLY SERIES.....	25



## IOWA ROTOCAST PLASTICS, INC.

**MAIN OFFICE** - 1712 Moellers Drive, PO Box 320, Decorah, Iowa 52101  
**FABRICATION** - 1764 Old Stage Road, Decorah, IA 52101  
**CONTACT** - 563-382-9636, 800-553-0050 [toll free], 563-382-3016 [fax], irp@irpinc.com [e-mail]  
**VISIT IRP ONLINE AT [WWW.IRPINC.COM](http://WWW.IRPINC.COM) OR FOLLOW US AT [f](#) [i](#) [t](#) [IRPINC.](#)**

\*Packouts for all IRP products measured without ice. Some variation may occur,



# CUSTOMIZED UNITS FOR ANY VENUE OR STORE



## IRP UNITS ARE AVAILABLE IN MULTIPLE BRANDS

Iowa Rotocast Plastics, Inc. units are available in multiple brands, colors, configurations and designs. Customize each unit to suit your selling situation or venue.



CORONA EXTRA



CORONA LIGHT



MODELO ESPECIAL



MODELO CHELADA



MODELO NEGRA



PACIFICO CLARA



VICTORIA



CORONA PREMIER



CORONA REFRESCA



**Durability.** IRP RotoTough™ products are the most durable merchandisers in the field, many of our original products built in 1983 are still in use today.



**Longevity.** When you need a merchandiser to stand the test of time, IRP products are the absolute solution to your needs.



**Cost effective.** IRP products pay for themselves within a few months or, at longest, after a year of their use. At some venues it takes less than 2 months to see a substantial ROI.



**Made in the USA.** All IRP products are designed and manufactured with extreme pride in Decorah, Iowa. Being “Made in the USA” ensures our quality and commitment to excellence.



## ICE HAWK

### DIMENSIONS

- 21.25" Dia. x 36" H x 14.5" Deep

### CAPACITY

- 106 - 12oz. cans
- 60 - 20oz. bottles
- 83 - 12oz. bottles
- 52 - 24/25oz. cans
- 82 - 16oz. cans
- 72 - quarts

### FEATURES

- Interchangeable graphics
- Available in ice-less innovation: includes full set of ice packs that keeps product cold where ice is not an option



## AVALANCHE PLATINUM

### DIMENSIONS

- 30" W x 18" D x 32" H

### CAPACITY

- 120 - 12oz. cans
- 60 - 20oz. bottles
- 72 - 12oz. bottles
- 45 - 24/25oz. cans
- 84 - 16oz. cans
- 88 - quarts

### FEATURES

- Modular design for larger pack-out with smaller footprint
- Deep core with two dividers, short core kit w/dividers
- Interchangeable graphics
- Ice melt reservoir
- 2" plate caster kit



## AVALANCHE

### DIMENSIONS

- 30" W x 16" D x 35" H

### CAPACITY

- 160 - 12oz. cans
- 72 - 20oz. bottles
- 96 - 12oz. bottles
- 72 - 24/25oz. cans
- 112 - 16oz. cans
- 112 - quarts

### FEATURES

- Interchangeable graphics
- Modular design for larger pack-out with smaller footprint
- Slide-in dividers for brand separation
- Recessed graphics to keep unit looking new
- Cross-merchandising options







## TEXAS ICER

### DIMENSIONS

- 48" W x 24" D x 36" H

### CAPACITY

- 128 - 12oz. cans
- 112 - 16oz. cans
- 105 - 24/25oz. cans
- 140 - 12oz. bottles
- 105 - 20oz. bottles
- 120 - quarts

### FEATURES

- Interchangeable graphics
- Large pack-out with shelf below
- Heavy-duty drain assembly with 16 quart capacity

## TEXAS ICER JR.

### DIMENSIONS

- 36" W x 24" D x 34.25" H

### CAPACITY

- 96 - 12oz. cans
- 74 - 16oz. cans
- 74 - 24/25oz. cans
- 104 - 12oz. bottles
- 74 - 20oz. bottles
- 80 - quarts

### FEATURES

- Interchangeable graphics
- Designed with convenient shelf below
- Dividers for brand separation



## ICER ELITE

### DIMENSIONS

- 17.25" Dia. x 9.75" H

### FEATURES

- Great for back-bars or sampling
- Molded-in drain
- 360° branding



## MAXIMIZER

### DIMENSIONS

- 16.75" W x 17.5" D x 12.25" H

### FEATURES

- Large exterior area to place graphics
- Light weight makes it easy to move to and from storage
- Small countertop footprint for virtually unlimited placement options







## CHILLER

### DIMENSIONS

- 36" W x 18" D x 8" H

### FEATURES

- Large exterior area to place graphics
- Light weight makes it easy to move to and from storage
- Small countertop footprint for virtually unlimited placement options





## ARCTIC

### DIMENSIONS

- 51" W x 24" D x 38" H

### CAPACITY

- 448 - 12oz. cans
- 336 - 16oz. cans
- 196 - 24/25oz. cans
- 312 - 12oz. bottles
- 196 - 20oz. bottles
- 288 - quarts

### FEATURES

- Interchangeable graphics
- Mold-in divider for easy brand separation
- Heavy duty wheels for easy mobility
- Locking lid to keep product safe



## SUPER ARCTIC

### DIMENSIONS

- 60.5" W x 31.5" D x 38" H

### CAPACITY

- 720 - 12oz. cans
- 560 - 16oz. cans
- 324 - 24/25oz. cans
- 510 - 12oz. bottles
- 384 - 20oz. bottles
- 440 - quarts

### FEATURES

- Interchangeable graphics
- Mold-in divider for easy brand separation
- Heavy duty wheels for easy mobility
- Mold-in handles and umbrella holder
- Locking lid to keep product safe







## PUSH CART

### DIMENSIONS

- 53.5" W x 30" D x 40" H

### CAPACITY

- 352 - 12oz. cans
- 141 - 20oz. bottles
- 228 - quarts
- 261 - 16oz. cans
- 153 - 24/25oz. cans

### FEATURES

- Interchangeable graphics
- Optional cash register and umbrella for all-in-one mobile selling
- Built in handles for easy mobility
- Optional pole topper with graphics and LED light kit



## TEXAS TANKER

### DIMENSIONS

- 44.5" W x 27.25" D x 30.5" H

### CAPACITY

- 436 - 12oz. cans
- 296 - 16oz. cans
- 168 - 24/25oz. cans
- 304 - 12oz. bottles
- 224 - 20oz. bottles
- 256 - quarts

### FEATURES

- RotoTough™ construction
- RotoTough™ divider for brand separation
- Heavy duty wheels
- Interchangeable graphic system





## ICC-1

### DIMENSIONS

- 60" W x 30" D x 98" H

### CAPACITY

- 598 - 12oz. cans
- 428 - 16oz. cans
- 240 - 24/25oz. cans
- 270 - 12oz. bottles
- 284 - 20oz. bottles
- 320 - quarts

### FEATURES

- Industry exclusive telescoping canopy
- Product shelf with plexi front to provide theft elimination and a cleaner serving environment
- Interchangeable graphics system
- RotoTough™ construction & heavy duty wheels
- Molded-in divider for brand separation



## REFRACTING ELITE.

### DIMENSIONS

- 62" W x 32 1/2" D x 91" H

### CAPACITY

- 612 - 12oz. cans
- 432 - 16oz. cans
- 280 - 24/25oz. cans
- 288 - 12oz. bottles
- 292 - 20oz. bottles
- 344 - quarts

### FEATURES

- RotoTough™ industry exclusive telescoping illuminated canopy
- RotoTough™ product shelf
- RotoTough™ divider for brand separation
- Interchangeable graphic system







## CYK

### DIMENSIONS

- 60.5" W x 31" D x 96" H

### CAPACITY

- 420 - 12oz. cans
- 296 - 16oz. cans
- 176 - 24/25oz. cans
- 312 - 12oz. bottles
- 204 - 20oz. bottles
- 240 - quarts

### FEATURES

- RotoTough™ illuminated canopy
- RotoTough™ serving shelf
- RotoTough™ divider for brand separation
- RotoTough™ handles for easy moving
- Interchangeable graphic system



## IPC-280

### DIMENSIONS

- 53.5" W x 26" D x 96" H

### CAPACITY

- 448 - 12oz. cans
- 336 - 16oz. cans
- 196 - 24/25oz. cans
- 273 - 12oz. bottles
- 196 - 20oz. bottles
- 280 - quarts

### FEATURES

- RotoTough™ product shelf
- RotoTough™ divider for brand separation
- RotoTough™ sliding locking lid
- Available with canopy
- Interchangeable graphic system

## AVAILABLE BRANDS





## 4-KEG DRAFT ELITE

### DIMENSIONS

- 84" W x 25" D x 108" H

### CAPACITY

- Up to 4 half keg barrels

### FEATURES

- New illuminated canopy with down lighting
- Full panel Interchangeable graphics
- Steel frame for optimal strength
- 6" heavy duty casters
- Stainless steel uprights



## PACKAGE ELITE

### DIMENSIONS

- 62" W x 32" D x 91" H

### CAPACITY

- 612 - 12oz. cans
- 432 - 16oz. cans
- 280 - 24/25oz. cans
- 288 - 12oz. bottles
- 292 - 20oz. bottles
- 344 - quarts

### FEATURES

- New illuminated canopy with down lighting
- Full panel Interchangeable graphics
- Steel frame for optimal strength
- 6" heavy duty casters
- Stainless steel uprights





## MFC-K89 PACKAGE

### DIMENSIONS

- 89" W x 31" D x 91.5" H

### CAPACITY

- 380 - 12oz. cans
- 300 - 16oz. cans
- 180 - 24/25oz. cans
- 336 - 12oz. bottles
- 180 - 20oz. bottles
- 270 - quarts

### FEATURES

- ACM canopy and brushed stainless steel sides
- Down lighting
- Stainless steel serving shelf and theft guard
- Rubber skirting and heavy duty bumper to help protect unit
- Heavy duty casters for easy mobility



## MFC-K89 DRAFT

### DIMENSIONS

- 84" W x 25" D x 91.5" H

### CAPACITY

- Up to 4 half keg barrels

### FEATURES

- ACM canopy and brushed stainless steel sides
- Down lighting
- Stainless steel serving shelf and theft guard
- Rubber skirting and heavy duty bumper to help protect unit
- Heavy duty casters for easy mobility







## MOBILE TRIKE PACKAGE

### DIMENSIONS

- 88" L x 26" W x 45.5" H

### CAPACITY

- 147 - 12 oz slim cans
- 120 - 12 oz cans
- 90 - 16 oz cans
- 70 - 24/25 oz cans
- 70 - 20 oz bottles
- 100 quarts

### FEATURES

- Umbrella mount
- Locking storage underneath
- Metal trike frame
- Dual sided stainless steel lid
- Interchangeable graphics



## MOBILE TRIKE DRAFT

### DIMENSIONS

- 88" L x 26" W x 56.5" H

### CAPACITY

- 2 - 1/6 kegs

### FEATURES

- Umbrella mount
- Locking storage underneath
- Metal trike frame
- Interchangeable graphics
- Double spigot draft tower
- 14" Drip tray
- 11 Gallon reservoir tank



# THE UNIVERSAL

## THE ULTIMATE SELLING STATION

If you can dream it, you can build it with the IRP Universal Ultimate Selling Station. Mix and match any option and create any size of selling station needed for your location, on or off premise.

## SELECT FROM GREAT FEATURES

Customizing your Universal System is a quick and easy way to get the most use from your chosen unit. Our large optional canopy provides excellent shade for vendors, as well as shelter from the elements.

Both large and small support carts provide extra storage and surface area. Locking lids keep your merchandise safe and secure. If you can dream it, we can create it. Customize your Universal today!



3 PIECE UNIVERSAL DRAFT



7 PIECE UNIVERSAL



10 PIECE UNIVERSAL

AVAILABLE BRANDS





## CURVE

### DIMENSIONS

- 66" W x 33" D x 91" H

### CAPACITY

- 452 - 12oz. cans
- 240 - 20oz. bottles
- 338 - 12oz. bottles
- 212 - 24/25oz. cans
- 374 - 16oz. cans
- 280 - quarts

### FEATURES

- RotoTough™ construction
- Optional external reservoir and locking lids



## STRAIGHT

### DIMENSIONS

- 36" W x 28" D x 91" H

### CAPACITY

- 336 - 12oz. cans
- 170 - 20oz. bottles
- 220 - 12oz. bottles
- 156 - 24/25oz. cans
- 264 - 16oz. cans
- 200 - quarts

### FEATURES

- RotoTough™ construction
- Optional external reservoir and locking lids



## DRAFT

### DIMENSIONS

- 84" W x 24.75" D x 87" H

### CAPACITY

- Up to four kegs

### FEATURES

- One 4 keg draft refrigerator with draft equipment
- Full panel base graphics
- Full panel, back-lit header graphics
- Header upright graphics
- 6" TPR casters







## BREEZER UR-1

### DIMENSIONS

- 29.5" W x 27.375" D x 78.75" H

### CAPACITY

- 315 - 12oz. cans
- 240 - 20oz. bottles
- 315 - 16oz. cans
- 240 - 24/25oz. cans

### FEATURES

- Casters
- Plastic front grill
- Cyclopentane insulation
- Heavy duty wire shelves
- Electronic fan motors
- LED perimeter lighting
- Locking high efficiency glass door
- Electronic temperature controller
- Durable steel construction
- Eco-friendly R134a refrigerant



## BREEZER UR-2

### DIMENSIONS

- 54.125" W x 29.625" D x 78.75" H

### CAPACITY

- 630 - 12oz. cans
- 480 - 20oz. bottles
- 630 - 16oz. cans
- 480 - 24/25oz. cans

### FEATURES

- Casters
- Plastic front grill
- Cyclopentane insulation
- Heavy duty wire shelves
- Electronic fan motors
- LED perimeter lighting
- Locking high efficiency glass door
- Electronic temperature controller
- Durable steel construction
- Eco-friendly R134a refrigerant





## HAWKER ELITE

### DIMENSIONS

- 22.625" W x 14.75" D x 10" H

### CAPACITY

- 64 - 12oz. cans
- 26 - 20oz. bottles
- 45 - 16oz. cans
- 29 - 24/25oz. cans

### FEATURES

- New and improved padded harness with harness attachment featuring quick detach system
- Rotomolded construction features molded-in handles with nestable design for easy storage and is 100% recyclable
- Ergonomic curved back and light weight - the lightest hawker on the market!
- Large Recessed graphic area to amplify your brand



## MULTI HAWKER ELITE

### DIMENSIONS

- 23.125" W x 17.875" D x 7.375" H

### CAPACITY

- 32 - 12oz. cans
- 24 - 20oz. bottles
- 32 - 16oz. cans
- 24 - 24/25oz. cans

### FEATURES

- New and improved padded harness with harness attachment featuring quick detach system
- Rotomolded construction features molded-in handles with nestable design for easy storage and is 100% recyclable
- Ergonomic curved back and light weight - the lightest hawker on the market!
- Large Recessed graphic area to amplify your brand



## ROTOMOLDED PUB TABLE

### DIMENSIONS

- 35" Dia x 41.875" H

### FEATURES

- Cost effective Rotomolded base & top
- Table top graphics
- Optional bucket insert on table top (14.25" Dia)
- Available with branded graphics



## RECYCLE BIN I

### DIMENSIONS

- 22" W x 22" D x 39" H w/lid

### FEATURES

- Stackable design
- Pyramid lid ensures containers are not placed on top of unit
- 100% recycled material construction available
- Perfect for stadiums, special events and stores







## SS MINI RACK

### DIMENSIONS

- 20" W x 11" D x 62" H

### CAPACITY

- 16 - 6 pack bottles
- 4 - 18 pack cans
- 12 - 12 pack cans
- 4 - 30 pack cans

### FEATURES

- Interchangeable graphics
- Four shelves with shelf strip areas



## SS INTERCHANGEABLE RACK

### DIMENSIONS

- 23" W x 16.5" D x 52" H

### CAPACITY

- 32 - 6 pack bottles
- 16 - 18 pack cans
- 24 - 12 pack cans
- 8 - 30 pack cans

### FEATURES

- Interchangeable graphics
- Four shelves with shelf strip areas
- Heavy duty casters for easy mobility



## EXPRESS RACK

### DIMENSIONS

- 37" W x 22.5" D x 51" H

### CAPACITY

- 64 - 6 pack bottles
- 64 - 12 pack cans

### FEATURES

- Interchangeable graphics
- Heavy duty casters for easy mobility





## SS WEEKENDER SMALL

### DIMENSIONS

- 32" W x 17" D x 61.5" H

### CAPACITY

- 24 - 12 pack cans
- 12 - 24 pack

### FEATURES

- Interchangeable graphics
- Heavy duty system for large pack-out display
- Stainless steel construction
- Four casters for easy mobility



## SS WEEKENDER LARGE

### DIMENSIONS

- 32" W x 34.5" D x 61.5" H

### CAPACITY

- 72 - 12 pack cans
- 36 - 24 pack

### FEATURES

- Interchangeable graphics
- Heavy duty system for large pack-out display
- Stainless steel construction
- Four casters for easy mobility





## CASE-STACKER I

### DIMENSIONS

- 16.5" W x 11.5" D x 4.5" H

### CAPACITY

- 12oz. 12 pk glass bottles - 6 pks, 2 per layer
- 12oz. fridge pk - 8 packs, 2 per layer
- 12oz. 12 pk - 10 pks, 2 per layer
- 12oz. 24 pk - 5 pks, 1 per layer
- 12oz. 30 pk - 6 pks, 2 per layer
- 16oz. 18 pk - 5 pks, 1 per layer
- Aluminum bottles 9 pk - 6 pks, 2 per layer

## CASE-STACKER II

### DIMENSIONS

- 20.5" W x 16.5" D x 4.5" H

### CAPACITY

- 12oz. 12 pk glass bottles - 12 pks, 4 per layer
- 12oz. fridge pk - 24 pks, 4 per layer
- 12oz. 12 pk - 20 pks, 4 per layer
- 12oz. 24 pk - 10 pks, 2 per layer
- 12oz. 30 pk - 6 pks, 2 per layer
- 16oz. 18 pk - 8 pks, 2 per layer
- Aluminum bottles 9 pk - 12 pks, 4 per layer

## CASE-STACKER III

### DIMENSIONS

- 32" W x 16" D x 4.5" H

### CAPACITY

- 12oz. 12 pk glass bottles - 18 pks, 6 per layer
- 12oz. fridge pk - 30 pks, 6 per layer
- 12oz. 12 pk - 30 pks, 6 per layer
- 12oz. 24 pk - 15 pks, 3 per layer
- 12oz. 30 pk - 12 pks, 4 per layer
- 16oz. 18 pk - 16 pks, 4 per layer
- Aluminum bottles 9 pk - 24 pks, 8 per layer







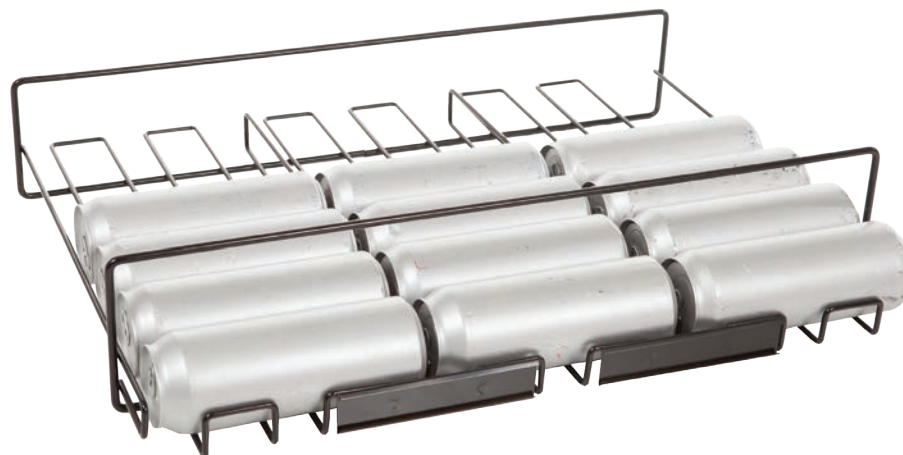
## 2 WIDE UNDER SHELF

### DIMENSIONS

- 18" W x 22" D x 5" H

### CAPACITY

- 14 - 24oz. cans



## 3 WIDE UNDER SHELF

### DIMENSIONS

- 25" W x 22" D x 5" H

### CAPACITY

- 21 - 24oz. cans





## HANGING 6-PACK RACK

### DIMENSIONS

- 24.5" W x 7.5" D x 65.5" H

### CAPACITY

- 18 - 6 packs

### FEATURES

- Use in displays or on cooler doors
- Six shelves of product display
- Adjustable width bracket



## SIDE KICK RACK

### DIMENSIONS

- 9" W x 5" D x 52" H

### CAPACITY

- 6 - 6 packs

### FEATURES

- Steel and wire rack
- For use along side the Hanging 6-Pack Rack or Hanging 24oz. Can Rack



## HANGING SINGLES RACK

### DIMENSIONS

- 24.625" W x 5" D x 65.75" H

### CAPACITY

- 56 - 16oz. cans
- 56 - 24/25oz. cans

### FEATURES

- Use in displays or on cooler doors
- Seven shelves of product display
- Adjustable width bracket





## GRIZZLY 15

### DIMENSIONS

- EXTERIOR - 14.375" H x 18.75" L x 11.375" D
- INTERIOR - 10.75" H x 14.125" L x 6.75" D

### CAPACITY

- 5lb. Ice, 15 cans - 12oz. cans
- 5lb. Ice, 12 cans - 16oz. cans
- 5lb. Ice, 9 bottles - 20oz. bottles
- 5lb. Ice, 8 cans - 24/25oz.
- 16 - quarts
- 12 lbs. dry weight

### FEATURES

- Molded-in heavy duty handles and hinges
- BearClaw™ latching system
- Easy going mobility with nylon shoulder strap
- Embossed ruler on lid
- Includes dry goods tray



## GRIZZLY 20

### DIMENSIONS

- EXTERIOR - 14.25" H x 20.25" L x 14.5" D
- INTERIOR - 10.25" H x 14.25" L x 9.25" D

### CAPACITY

- 5lb. Ice, 24 cans - 12oz. cans
- 5lb. Ice, 18 cans - 16oz. cans
- 5lb. Ice, 14 bottles - 20oz. bottles
- 5lb. Ice, 12 cans - 24/25oz.
- 20 - quarts
- 16 lbs. dry weight

### FEATURES

- Molded-in heavy duty handles and hinges
- BearClaw™ latching system
- 2" drain plug for quick and easy draining
- Embossed ruler on lid
- Stainless steel handle
- Includes dry goods tray





## GRIZZLY 40

### DIMENSIONS

- **EXTERIOR** - 15.375" H x 25.5" L x 16" D
- **INTERIOR** - 11.75" H x 19.5" L x 10.5" D

### CAPACITY

- 10lb. Ice, 56 cans - 12oz. cans
- 10lb. Ice, 36 cans - 16oz. cans
- 10lb. Ice, 23 bottles - 20oz. bottles
- 10lb. Ice, 18 cans - 24/25oz.
- 40 - quarts
- 24 lbs. dry weight

### FEATURES

- Molded-in heavy duty handles and hinges
- Nylon rope handle with sleeved rubber grip
- 2" drainage system with full length drain channels
- BearClaw™ latching system
- Embossed ruler on lid
- Includes dry goods tray

## GRIZZLY 60

### DIMENSIONS

- **EXTERIOR** - 17.25" H x 30.375" L x 17.375" D
- **INTERIOR** - 13" H x 24.375" L x 11.75" D

### CAPACITY

- 20lb. Ice, 72 cans - 12oz. cans
- 20lb. Ice, 52 cans - 16oz. cans
- 20lb. Ice, 34 bottles - 20oz. bottles
- 20lb. Ice, 32 cans - 24/25oz.
- 60 - quarts
- 30 lbs. dry weight

### FEATURES

- Molded-in heavy duty handles and hinges
- Nylon rope handle with sleeved rubber grip
- 2" drainage system with full length drain channels
- BearClaw™ latching system
- Embossed ruler on lid
- Includes dry goods tray







## GRIZZLY 75

### DIMENSIONS

- EXTERIOR - 17.875" H x 33.125" L x 17.75" D
- INTERIOR - 13.75" H x 27.5" L x 12.625" D

### CAPACITY

- 20lb. Ice, 84 cans - 12oz. cans
- 20lb. Ice, 64 cans - 16oz. cans
- 20lb. Ice, 40 bottles - 20oz. bottles
- 20lb. Ice, 36 cans - 24/25oz.
- 76 - quarts
- 34 lbs. dry weight

### FEATURES

- Molded-in heavy duty handles and hinges
- Nylon rope handle with sleeved rubber grip
- 2" drainage system with full length drain channels
- BearClaw™ latching system
- Embossed ruler on lid
- Includes dry goods tray

## GRIZZLY 100

### DIMENSIONS

- EXTERIOR - 20.125" H x 37" L x 18" D
- INTERIOR - 16.25" H x 31.375" L x 13.875" D

### CAPACITY

- 30lb. Ice, 96 cans - 12oz. cans
- 30lb. Ice, 76 cans - 16oz. cans
- 30lb. Ice, 52 bottles - 20oz. bottles
- 30lb. Ice, 42 cans - 24/25oz.
- 100 - quarts
- 38 lbs. dry weight

### FEATURES

- Molded-in heavy duty handles and hinges
- Nylon rope handle with sleeved rubber grip
- 2" drainage system with full length drain channels
- BearClaw™ latching system
- Embossed ruler on lid
- Includes dry goods tray



# THE ALL NEW GRIZZLY DRIFTER

NEW COLOR

NEW COLOR



## DRIFTER 12+

If you are headed out on a quick day trip to the beach or a night spent around the fire with friends, the Grizzly Drifter 12+ is always the best choice. From the Heavy Duty Zipper to the non-skid molded bottom, all your drinks and snacks will stay perfect for you to enjoy. Plus, the collapsible drink pocket can hold your Grizzly Grip, so you can sit back, relax, and drift away. Imported.

## DRIFTER 20

With its easy-zip flip-top lid, your Drifter 20 is ready for wherever you may roam. With its multiple pockets, soft shoulder strap and carrying handle, the Drifter 20 has you covered for everything you need to pack inside. The removable waterproof liner and EVA foam insulation locks in the cold, so you can relax and enjoy your lifestyle. Imported.





## SLIM CAN COOLER

### CAPACITY

- One 12oz. can

### FEATURES

- Double-wall vacuum insulated: Keeps your beverage cold up to 4 hours.
- Built-in hand grip: Three grip grooves will give you a good handle on your slim can beverage.
- Rubberized footpad
- Sweat free
- Textured Charcoal or Brushed Stainless Finish
- Imported



## 12oz. CAN COOLER

### CAPACITY

- One 12oz. can

### FEATURES

- Double-wall vacuum insulated
- Ergonomic built in hand grip
- Stainless steel construction
- Rubberized grip pad to keep the cup from sliding
- Sweat free
- Textured charcoal or brushed stainless finish
- Imported



## 16oz. POUNDER

### CAPACITY

- One 16oz. can

### FEATURES

- Double-wall vacuum insulated
- Ergonomic built in hand grip
- Stainless steel construction
- Rubberized grip pad to keep the cup from sliding
- Sweat free
- Textured charcoal or brushed stainless finish
- Imported







## 20oz. GRIP CUP

### CAPACITY

- 20oz.

### FEATURES

- Double-wall vacuum insulated
- Ergonomic built in hand grip
- Stainless steel construction
- Rubberized grip pad to keep the cup from sliding
- Smoked polymer lid
- Sweat free
- BPA free
- Textured charcoal or brushed stainless finish
- Imported



## 32oz. GRIP CUP

### CAPACITY

- 32oz.

### FEATURES

- Double-wall vacuum insulated
- Ergonomic built in hand grip
- Stainless steel construction
- Rubberized grip pad to keep the cup from sliding
- Smoked polymer lid
- Sweat free
- BPA free
- Textured charcoal or brushed stainless finish
- Imported







Check out our full line of services and more great products at [IRPINC.COM](http://IRPINC.COM) or follow us online at    [IRPINC](https://www.facebook.com/IRPINC)